

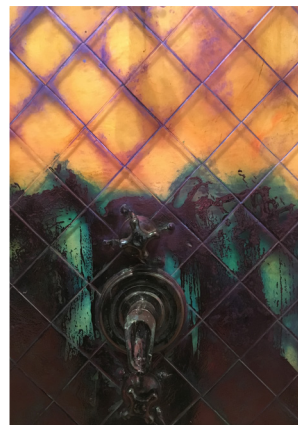
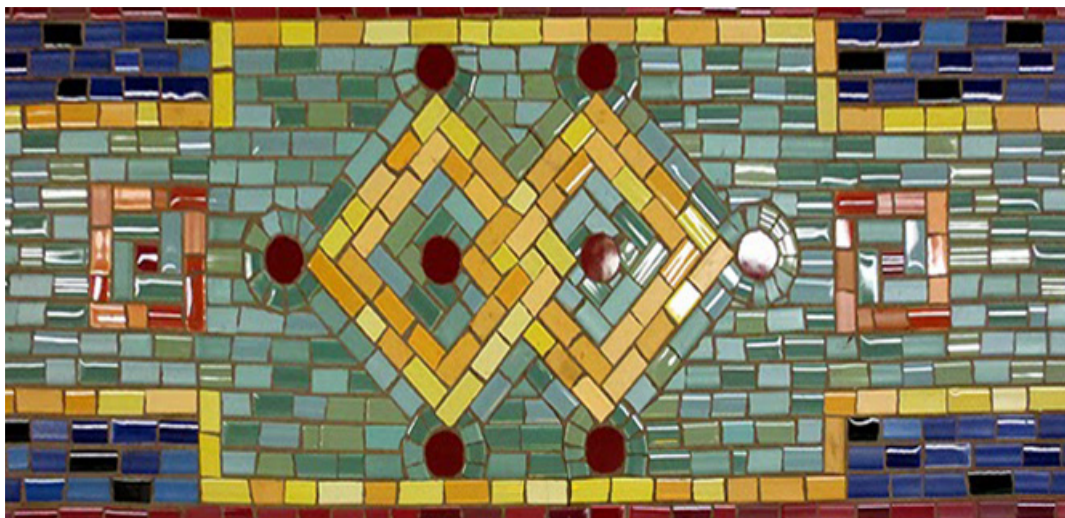
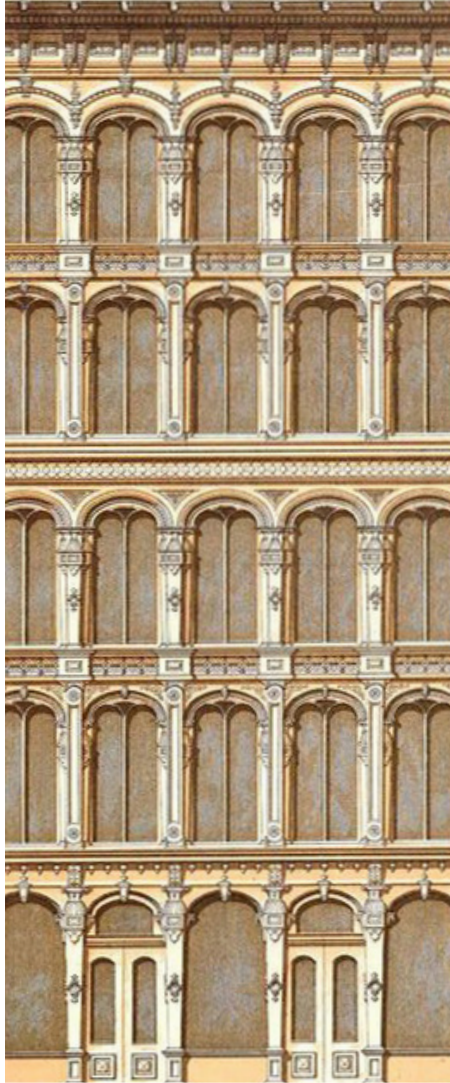
ACE  EVERETT
NEW YORK

F/W 18

Lookbook

Designed to
Stay Up and Stand Out





Collection Inspiration

New York is a city of dreamers. They flood this asphalt maze, each leaving traces of their stay—like roommates that disappeared one day, expired cereal and broken headphones left in their wake; like smudges and fingerprints left on the city's blank slate.

A layercake of paint distorts the once-crisp lines of cast-iron grates. Neon letters, hung like necklaces, cast an alien glow on neoclassical columns. Walls, plastered dense with graffiti and shreds of faded posters, peel like onions, flaking paper and paint, now matted across once-pristine planes.

Each new influx of dreamers appropriates the New York they find to create the New York they need. Time leaves nothing unchanged; change, constrained only by the framework of the past.

Using William Chappel's miniature paintings of 19th-century lower Manhattan as a point of departure, Ace & Everett explores this interplay of old and new. Retracing Chappel's steps, the Fall/ Winter 2017 collection examines the modern urban landscape through the lense of these paintings.

Architectural details from downtown Manhattan are collaged with historical and menswear references, and abstracted to yield sharp, modern, geometric designs. At once familiar, yet unfamiliar, these patterns integrate seamlessly into any wardrobe.





Forsythe

Old remnants of wheatpaste posters serve as the inspiration for the Forsythe. The pattern superimposes the classic rib over an existing castiron motif for an intricate dégradé effect.





Forsythe

MID-CALF HEIGHT



AE_FW18_FY_1
Black / Nantucket Red



AE_FW18_FY_2
Black / Khaki



AE_FW18_FY_3
Black / Fern Green



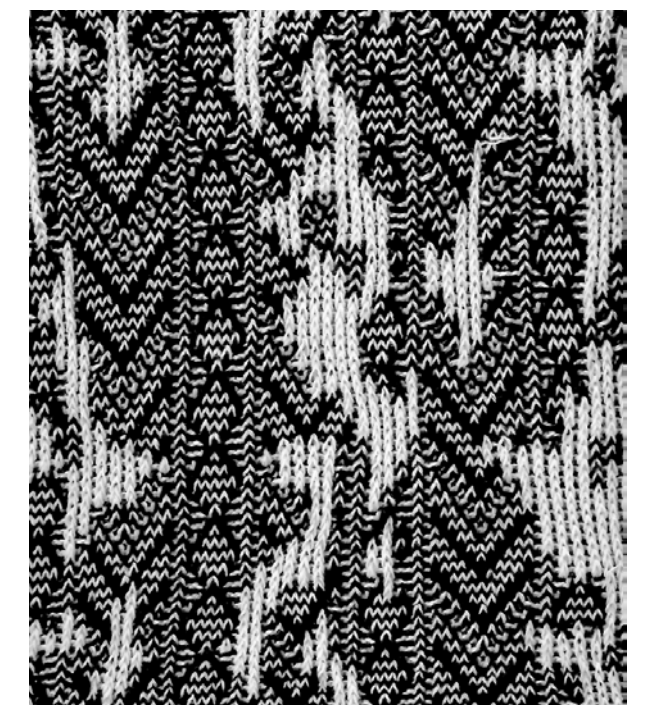
AE_FW18_FY_4
Black / Indigo



AE_FW18_FY_5
Black / Lake Blue



AE_FW18_FY_6
Black / White



Forsythe

SUPIMA BLEND

75% Supima Cotton
23% Nylon
2% Spandex

Stanton



Based off of the rhythm and interplay between glass and cast-iron in the facade of Soho's many historic buildings, the Stanton transforms into a regimented pattern of circles and squares.

Stanton

MID-CALF HEIGHT



AE_FW18_ST_1
Tunisian Navy / Merlot



AE_FW18_ST_2
Tunisian Navy / Rusted Orange



AE_FW18_ST_3
Tunisian Navy / Khaki



AE_FW18_ST_4
Tunisian Navy / Fern Green



AE_FW18_ST_5
Tunisian Navy / Indigo



AE_FW18_ST_6
Tunisian Navy / Lake Blue

Stanton

ANKLE HEIGHT



AE_FW18_ST_1S
Tunisian Navy / Merlot



AE_FW18_ST_2S
Tunisian Navy / Rusted Orange



AE_FW18_ST_3S
Tunisian Navy / Khaki



AE_FW18_ST_4S
Tunisian Navy / Fern Green

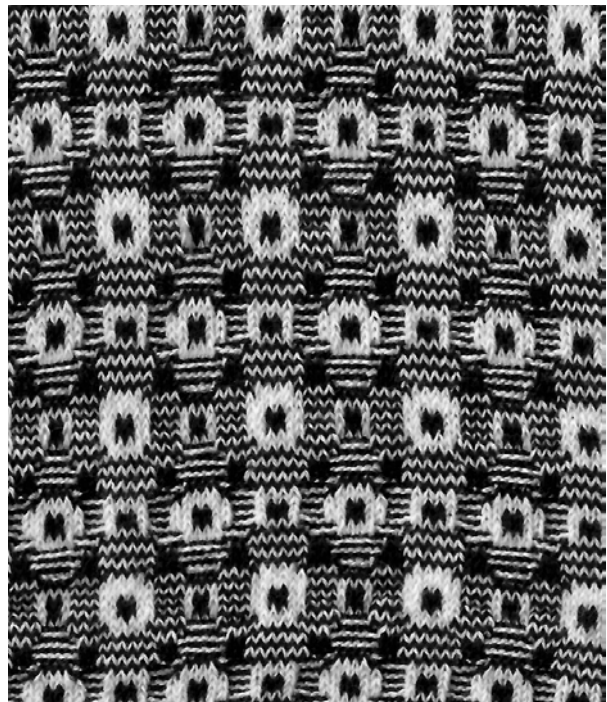


AE_FW18_ST_5S
Tunisian Navy / Indigo



AE_FW18_ST_6S
Tunisian Navy / Lake Blue





Stanton

SUPIMA BLEND

75% Supima Cotton
23% Nylon
2% Spandex



Essex



The Essex takes the grillwork from subway grates and marries it with a nautical twist. A reference to William Chappel's *Old Ferry Stairs*, this pattern hints at the historic maritime commerce that thrived along the East River, while rooting it in today's cityscape.



Essex

MID-CALF HEIGHT



AE_FW18_EX_1
Mahogany / Nantucket Red



AE_FW18_EX_2
Mahogany / Ochre



AE_FW18_EX_3
Mahogany / Fern Green



AE_FW18_EX_4
Mahogany / Lake Blue



AE_FW18_EX_5
Mahogany / Tunisian Navy



AE_FW18_EX_6
Mahogany / Espresso

Essex

ANKLE HEIGHT



AE_FW18_EX_1S
Mahogany / Nantucket Red



AE_FW18_EX_2S
Mahogany / Ochre



AE_FW18_EX_3S
Mahogany / Fern Green



AE_FW18_EX_4S
Mahogany / Lake Blue

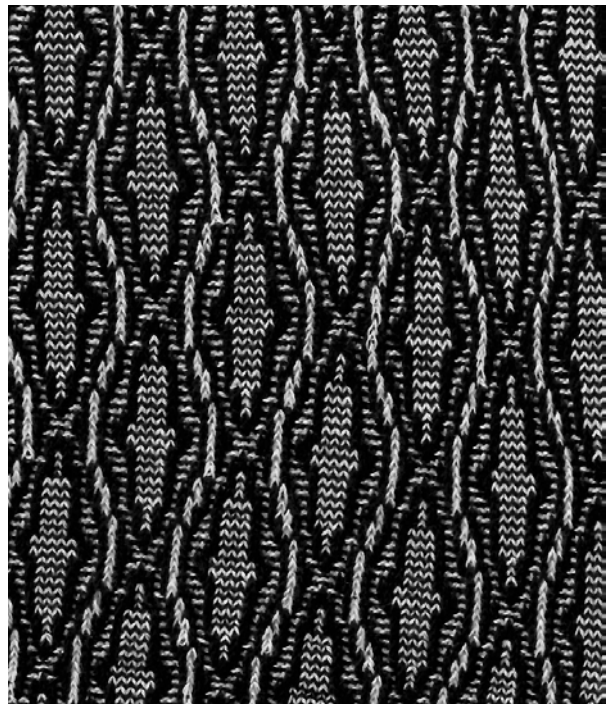


AE_FW18_EX_5S
Mahogany / Tunisian Navy



AE_FW18_EX_6S
Mahogany / Espresso





Essex

SUPIMA BLEND

75% Supima Cotton
23% Nylon
2% Spandex





Thompson

A jam-packed wall of Eastern medicines and Chinese teas dictates the Thompson's rigid geometries—its strict lines softened by a dimensionality that alludes to Soho's weathered cobblestone streets.



Thompson

MID-CALF HEIGHT



AE_FW18_TN_1
Black / Merlot



AE_FW18_TN_2
Black / Rusted Orange



AE_FW18_TN_3
Black / Ochre



AE_FW18_TN_4
Black / Fern Green



AE_FW18_TN_5
Black / Indigo



AE_FW18_TN_6
Black / White





Thompson

SUPIMA BLEND

75% Supima Cotton
23% Nylon
2% Spandex

Baxter



The Baxter, our version of the traditional Fair Isle, gets remixed with an irregular zigzag, the dueling patterns mimicking the effect of spraypainted graffiti on brick.

Baxter

MID-CALF HEIGHT



AE_FW18_BX_1
Merlot / Lake Blue



AE_FW18_BX_2
Rusted Orange / Khaki



AE_FW18_BX_3
Fern Green / Lake Blue



AE_FW18_BX_4
Indigo / Rusted Orange



AE_FW18_BX_5
Indigo / Ochre



AE_FW18_BX_6
Black / White

Baxter

ANKLE HEIGHT



AE_FW18_BX_1S
Merlot / Lake Blue



AE_FW18_BX_2S
Rusted Orange / Khaki



AE_FW18_BX_3S
Fern Green / Lake Blue



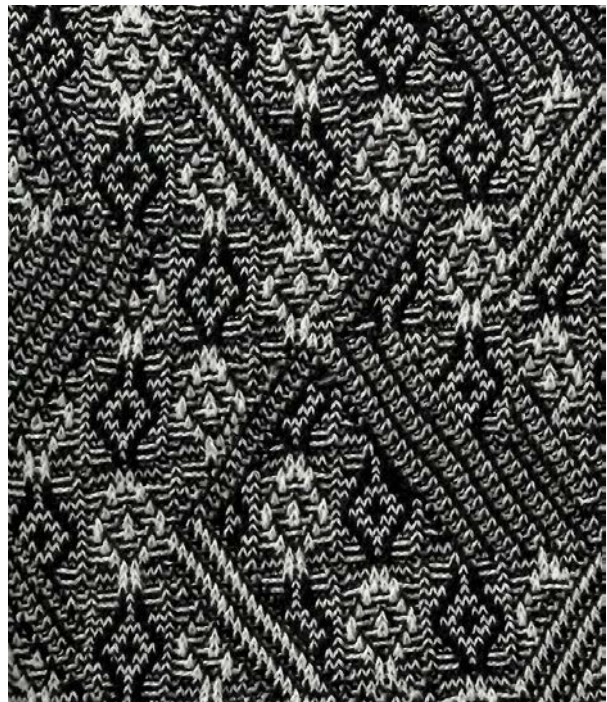
AE_FW18_BX_4S
Indigo / Rusted Orange



AE_FW18_BX_5S
Indigo / Ochre



AE_FW18_BX_6S
Black / White



Baxter

SUPIMA BLEND

75% Supima Cotton
23% Nylon
2% Spandex



Lexington



The Lexington subverts the classic checkerboard pattern by introducing an unexpected twist: an interlocking-diamond motif pulled from Canal Street's subway mosaics mimicks the classic cable-knit.



Lexington

MID-CALF HEIGHT



AE_FW18_LX_1
Merlot / Natural Silk



AE_FW18_LX_2
Rusted Orange / Natural Silk



AE_FW18_LX_3
Ochre / Natural Silk



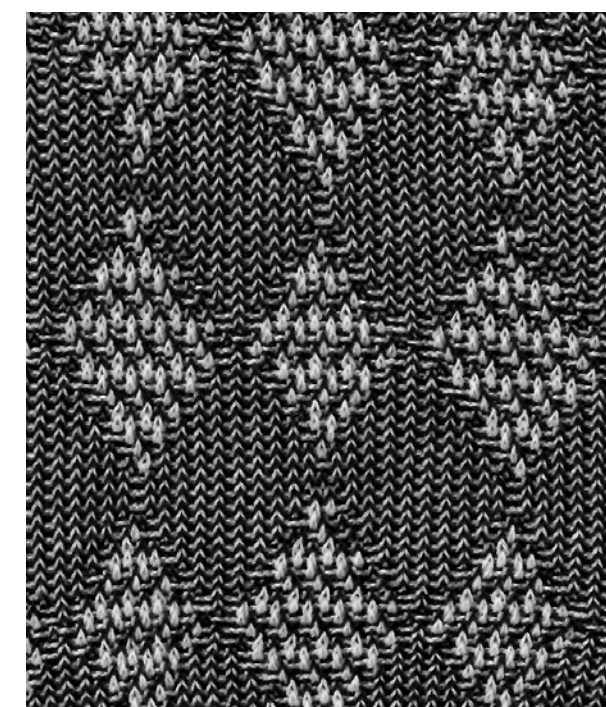
AE_FW18_LX_4
Fern Green / Natural Silk



AE_FW18_LX_5
Indigo / Natural Silk



AE_FW18_LX_6
Tunisian Navy / Natural Silk



Lexington

SILK BLEND

53% Supima Cotton
28% Nylon
17% Silk
2% Spandex

Merino Core

MID-CALF HEIGHT



AE_CORE_MB_1
Ebony Mamba



AE_CORE_CB_1
Midnight Allen



AE_CORE_RF_1
Espresso Raf



AE_CORE_DT_1
Charcoal Downtown

Limited Edition

MID-CALF HEIGHT



AE_CASH_CL_1
Ebony / Ochre Classic Rib



AE_CASH_CL_2
Midnight / Fern Green Classic Rib



AE_CASH_CL_3
Charcoal / Nantucket Red Classic Rib

Merino Core

WOOL BLEND

52% Merino Wool
26% Supima Cotton
21% Nylon
1% Spandex

Limited Edition

CASHMERE BLEND

49% Merino Wool
26% Cashmere
21% Nylon
3% Supima Cotton
1% Spandex

For Wholesale Inquiries

PLEASE CONTACT SAGE DISCH AT SAGE@ACEANDEVERETT.COM