

ACE  EVERETT
NEW YORK

S/S 18 *Lookbook*

Designed to
Stay up and Stand out



ACE & EVERETT
NEW YORK

S/S 18
Lookbook



SPRING SUMMER 2018

Collection Inspiration

Ace & Everett's Spring/Summer 2018 collection reflects on the romance of the urban experience. Juxtaposing Kerry James Marshall's exuberant "Garden Project" series against Edward Hopper and Charles Sheeler's desolate streetscapes, this collection delves into the incongruities of city life.

Still, silent structures, backdrop to frenzied pedestrians.

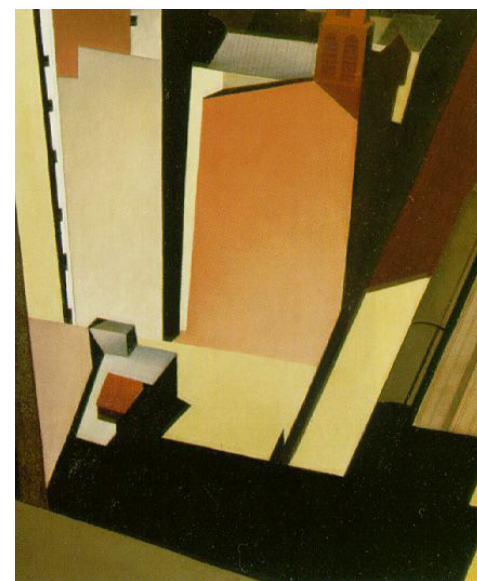
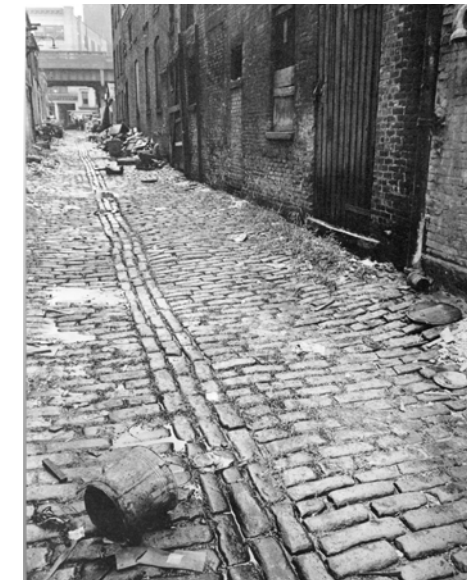
Urban decay, foil to the life that thrives within it.

Verdant shoots, fighting to emerge from seams in a thick coat of asphalt.

A gingham blanket in Central Park, a picnic on the grass.

Framed by steel and glass spires.

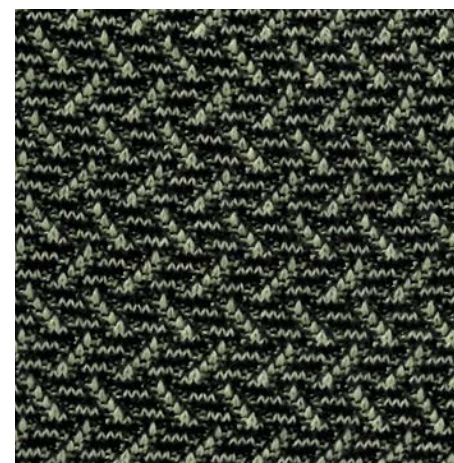
Rigid geometry yields to the wild and organic. Hard lines and sharp angularity give way to unstudied softness. Nature invades the man-made; the man-made, in turn, encroaching on nature. Sun-dappled hues dance among the shadows. Frosty pastels tangle with saturated pigments for a riotous explosion of color. The beauty of the city lays in the rapid collision of extremes and in the unexpected in-betweens.





Garrett

The **Garrett** recalls Edward Hopper's *Early Sunday Morning*, the pattern lifted from the facades of his barren streetscape; brick apartments over empty storefronts, softly lit by the early dawn sun.





Garrett



Black / Bubblegum
AE_SS18_GT_01



Black / Peach
AE_SS18_GT_02



Black / Daffodil
AE_SS18_GT_03



Black / Mint
AE_SS18_GT_04



Black / Concrete Gray
AE_SS18_GT_05



Black / Lavender
AE_SS18_GT_06



Leonard

The drips and blots scattered across Marshall's *Better Homes, Better Gardens* become dandelion puffs, dancing across the **Leonard** like clouds on a cotton candy meadow.



Leonard



Cool Coral / White
AE_SS18_LD_01



Peach / White
AE_SS18_LD_02



Daffodil / White
AE_SS18_LD_03



Mint / White
AE_SS18_LD_04



Lavender / White
AE_SS18_LD_05



Tunisian Navy / White
AE_SS18_LD_06



Campbell

The cracks of cobblestone streets spring to life with early promises of warm weather. Like weeds poking up between weathered stone, bright colors infiltrate the *Campbell's* black background.





Campbell



Black / Orange Blaze
AE_SS18_CL_02



Black / Brick Red
AE_SS18_CL_01



Black / Caution Yellow
AE_SS18_CL_03



Black / Forest Green
AE_SS18_CL_04



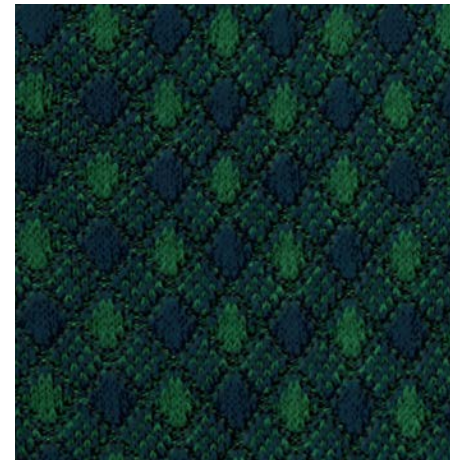
Black / Deep Sea
AE_SS18_CL_05



Black / White
AE_SS18_CL_07



Black / Purple Haze
AE_SS18_CL_06



Graham

The **Graham** abstracts the traditional red-and-white picnic blanket from Marshall's *Past Times*, adding a twist with unexpected color.



Graham



Tunisian Navy / Caution Yellow
AE_SS18_GM_02



Tunisian Navy / Brick Red
AE_SS18_GM_01



Tunisian Navy / Forest Green
AE_SS18_GM_03



Tunisian Navy / Deep Sea
AE_SS18_GM_04



Tunisian Navy / Purple Haze
AE_SS18_GM_05



Black / White
AE_SS18_GM_07



Black / Tunisian Navy
AE_SS18_GM_06

Peyton

Plastic tarps, swaddling sky-bound scaffolding, lend the Peyton its subtle, basket-weave texture and synthetic shimmer. Knit in silk and Supima cotton, we transform the utilitarian into something more sumptuous.





Peyton



Caution Yellow / Natural
AE_SS18_PN_02



Brick Red / Natural
AE_SS18_PN_01



Forest Green / Natural
AE_SS18_PN_03



Deep Sea / Natural
AE_SS18_PN_04



Tunisian Navy / Natural
AE_SS18_PN_05



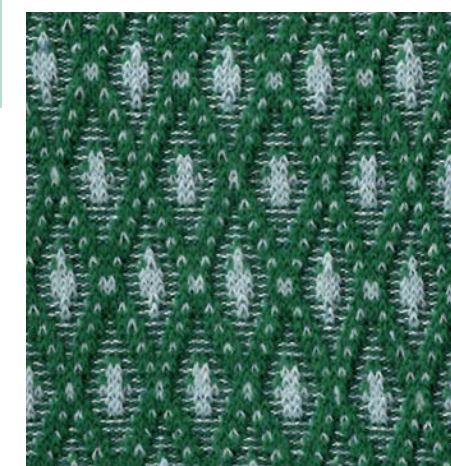
Purple Haze / Natural
AE_SS18_PN_06



Black / Natural
AE_SS18_PN_07

Ford

The hard edges of the **Ford** mimic the angularity of Sheeler's *Criss-Crossed Conveyors, River Rouge Plant*; straight lines drafted, sharp and graphic against a faded sky.





Ford



Brick Red / Peach
AE_SS18_FD_02



Brick Red / Concrete Gray
AE_SS18_FD_01



Forest Green / Concrete Gray
AE_SS18_FD_03



Forest Green / Daffodil
AE_SS18_FD_04



Deep Sea / Mint
AE_SS18_FD_05



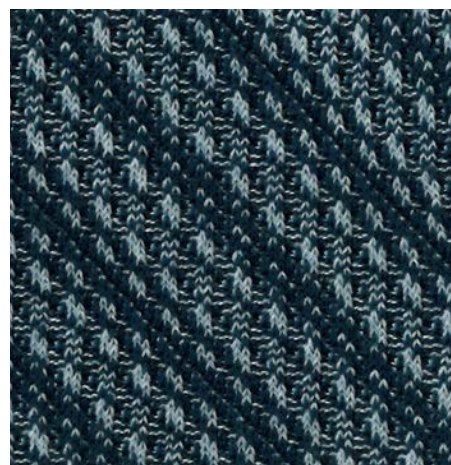
Black / White
AE_SS18_FD_07



Purple Haze / Mint
AE_SS18_FD_06

Emerson

Painted in vivid monochromes, the *Emerson* reimages potholed roadways as a broken pinstripe, with rainbow lenses over its interrupted texture.





Emerson



Brick Red / Lavender
AE_SS18_EN_01



Orange Blaze / Cool Coral
AE_SS18_EN_02



Caution Yellow / Daffodil
AE_SS18_EN_03



Forest Green / Mint
AE_SS18_EN_04



Deep Sea / Concrete Gray
AE_SS18_EN_05



Tunisian Navy / Concrete Gray
AE_SS18_EN_06

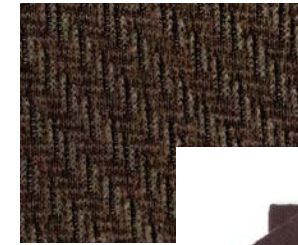
Core Patterns



Mamba

The **Mamba** builds on the color-blocked marble floors of the American Museum of Natural History for a psychedelic take on the traditional argyle.

Ebony / Black, AE_CORE_MB_01



Raf

Drawing from the tilework in Grand Central's Whispering Gallery, the **Raf** is a subtle herringbone pattern that makes a statement from across the room.

Espresso / Espresso, AE_CORE_RF_01



Allen

Inspired by the radiating stainless-steel cladding on the spire of the Chrysler Building, the **Allen** celebrates Art Deco geometry in this intricate pattern.

Midnight / Tunisian Navy, AE_CORE_CB_01



Downtown

The **Downtown**'s sharp angles electrify the stodgy pinstripe with a frenetic energy that echoes the bustling spirit of New York.

Charcoal / Slate, AE_CORE_DT_01

